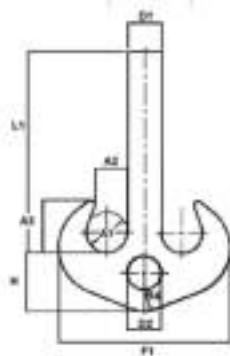
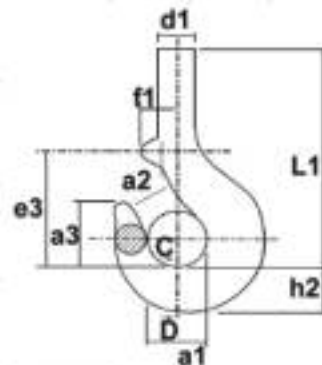


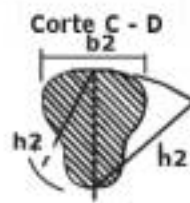
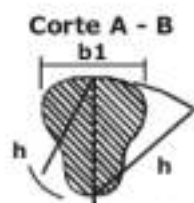
DIN 15402 RFN



DIN 15402 RFB



DIN 15401 RFN



### GANCHOS HASTE DUPLOS - DIN 15402

DIN nº	A1 mm	A2 mm	A3 mm	B1 mm	D1 mm	F1 mm	H mm	L1 mm	C.T. ton.	PESO Kg
20	125	100	163	106	106	531	132	650	40.0	99.5
25	140	112	182	118	118	598	150	715	50.0	138
32	160	125	205	132	132	672	170	790	64.0	197
40	180	140	230	150	150	754	190	885	80.0	286
50	200	160	260	170	170	842	212	965	100.0	394
63	224	180	292	190	190	944	236	1090	126.0	547
80	250	200	325	212	212	1062	265	1235	160.0	759
100	280	224	364	236	236	1186	300	1375	200.0	1060

As cargas de trabalho apresentadas correspondem à classe P.

### GANCHOS HASTE SIMPLES - DIN 15401

DIN nº	A1 mm	A2 mm	A3 mm	B2 mm	D1 mm	E3 mm	F2 mm	H2 mm	L1 mm	C.T. ton.	PESO Kg
1.6	58	45	64	38	36	118	35	48	224	3.2	4.5
2.5	69	50	72	45	42	132	40	58	253	5.0	6.3
4	71	56	80	53	48	148	45	67	285	8.0	8.8
5	80	69	90	60	53	165	51	75	318	10.0	12.3
6	90	71	101	67	60	185	57	85	380	12.0	17.1
8	100	80	113	75	67	210	64	95	418	16.0	24
10	112	90	127	85	75	221	46	106	460	20.0	40
12	125	100	143	95	85	252	53	118	525	24.0	55
16	140	112	160	106	95	280	58	132	595	32.0	77
20	160	125	180	118	106	330	68	150	665	40.0	112
25	180	140	202	132	118	360	74	170	735	50.0	160
32	200	160	225	150	132	400	80	190	810	64.0	220
40	224	180	252	170	150	447	93	212	905	80.0	310
50	250	200	285	190	170	485	100	236	990	100.0	430
63	280	224	320	212	190	550	108	265	1120	125.0	600
80	315	250	356	236	212	568	113	300	1270	160.0	860
100	355	280	402	265	236	688	113	335	1415	200.0	1220

As cargas de trabalho apresentadas correspondem à classe P.